



Big Ben

This landmark stands over 315 feet (96m) high. It is named after the 13.5 tonne bell housed within its tower.



London Eye

This landmark is 443 feet (135m) tall. Over 3.75 million visitors come each year to wonder at the views.



National Gallery

Home to over 2,300 different works of art, this attraction welcomes more than 6 million visitors each year!



MI6 Headquarters

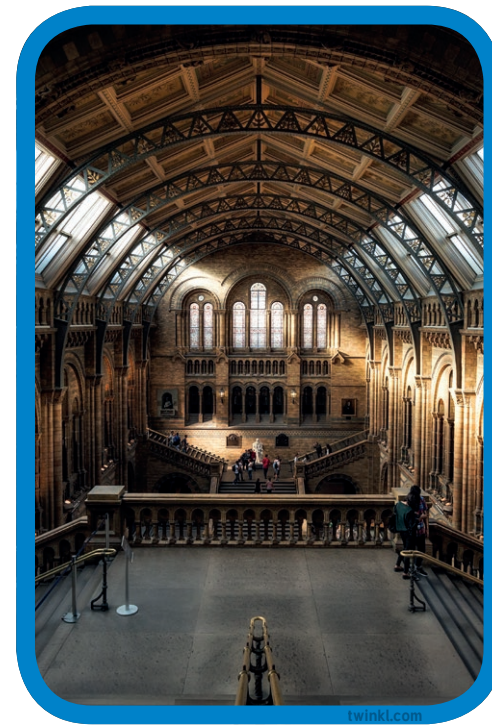
This building is home to the UK's intelligence and security services! Take a boat down the Thames and you'll easily spy it!

"MI6 Headquarters" by Garry Knight Follow is licensed under CC BY 2.0.



Houses of Parliament

With 900 years of history, this is where the House of Commons and the House of Lords meet.



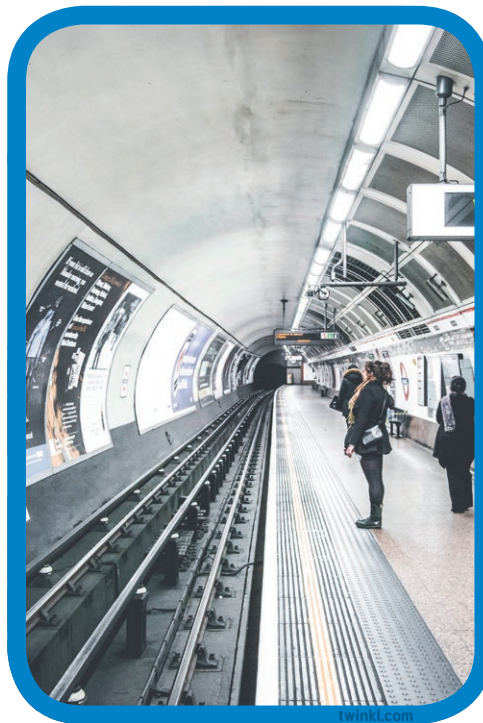
Natural History Museum

Whether you prefer dinosaurs or dragonflies, moths or woolly mammoths, you can learn all about them in the exhibition halls of this building.



Royal Albert Hall

Completed in 1871, this concert venue hosts the annual BBC Proms, and can hold 5,400 people. Its organ has 9,999 pipes!



London Underground

This landmark can take you to 270 different stations. Its trains can travel up to 60mph!



twinkl.com

Westminster Abbey

Built in 1245,
this landmark has
over 1000 years
of history and
17 monarchs
buried within.

twinkl.com



twinkl.com

Tower Bridge

First opened in
1894, this London
landmark is opened
at least once a day
now. But, if you
need it to open, you
must give 24 hours'
notice- make sure
the cars and buses
have stopped first!

twinkl.com

twinkl.com



twinkl.com

The Gherkin

twinkl.com

30 St Mary
Axe has been
nicknamed 'The
Gherkin' due to
its' unique shape.
It is covered in
24,000 m²
of glass!



St Paul's Cathedral

This iconic, world-
famous
dome is a main
feature of London's'
skyline. It is the
home of the
Bishop of London.

["Admiral Horatio Nelson, Nelson's Column, Trafalgar Square, London"](#) by [Beata May](#) licensed under CC BY 2.0.



Nelson's Column

Found in Trafalgar
Square, this
monument is 51.6m
tall and was built in
honour of Admiral
Horatio Nelson,
who died at the
Battle of Trafalgar.



Buckingham Palace

The Queen's official London home, this building has 775 rooms, including 240 bedrooms, 78 bathrooms, a cinema and a swimming pool.

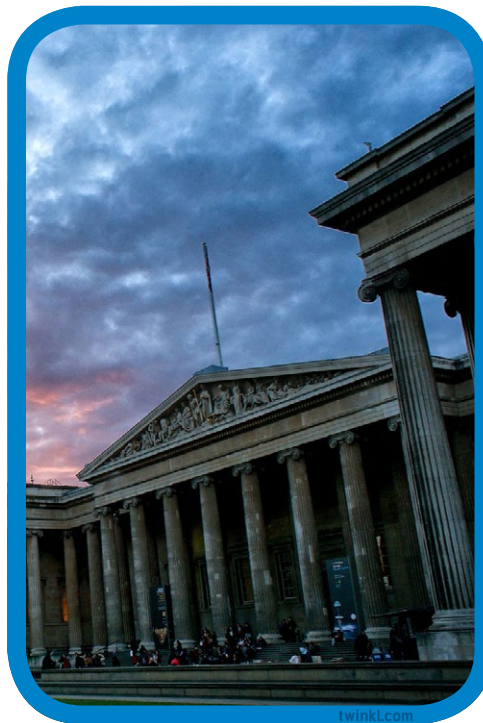


Tower of London

["Tower of London viewed from the River Thames"](#) by [Bob Collowânis](#) licensed under CC BY 2.0.

["British Museum at sunset"](#) by [Paul Hudson](#) licensed under CC BY 2.0.

The oldest part of this landmark was built in 1078 by William the Conqueror. As well as being a royal house, this building has also been a prison. It is now home to Yeoman Warders, ravens and the Crown Jewels.



British Museum

This landmark first opened its doors to visitors in 1759. It is home to many historical artefacts from around the world, including the Rosetta Stone and the Elgin Marbles.



Albert Memorial

Opened in 1872, this landmark was commissioned by Queen Victoria in memory of her husband. It is 54m tall and the statue at the centre is made of bronze covered with gold leaf.



St Pancras Station

This landmark was opened in 1868, and was almost demolished in the 1960s but a campaign supported by poet John Betjeman saved it. Modernisation in the early 2000s opened up many of the old storage areas. This space is now a place where visitors can shop, eat or wait comfortably for their train.



Wembley Stadium

This building was opened in 2007, on the site of a former venue of the same name. It can seat up to 90,000 people under an arch 440 feet (133m) high!



Olympic Park

A relatively new landmark, this venue has had more than 16 million visitors since it opened in Summer 2012. It includes a tennis centre, a swimming and diving centre and a multi-use sports venue, all of which can be spotted from the 114m tall Orbit sculpture.



The Shard

At 309.6m tall, this isn't just the tallest building in London, it's the tallest in European Union! Amazingly, it is 95 storeys tall!