

Parts of Plants



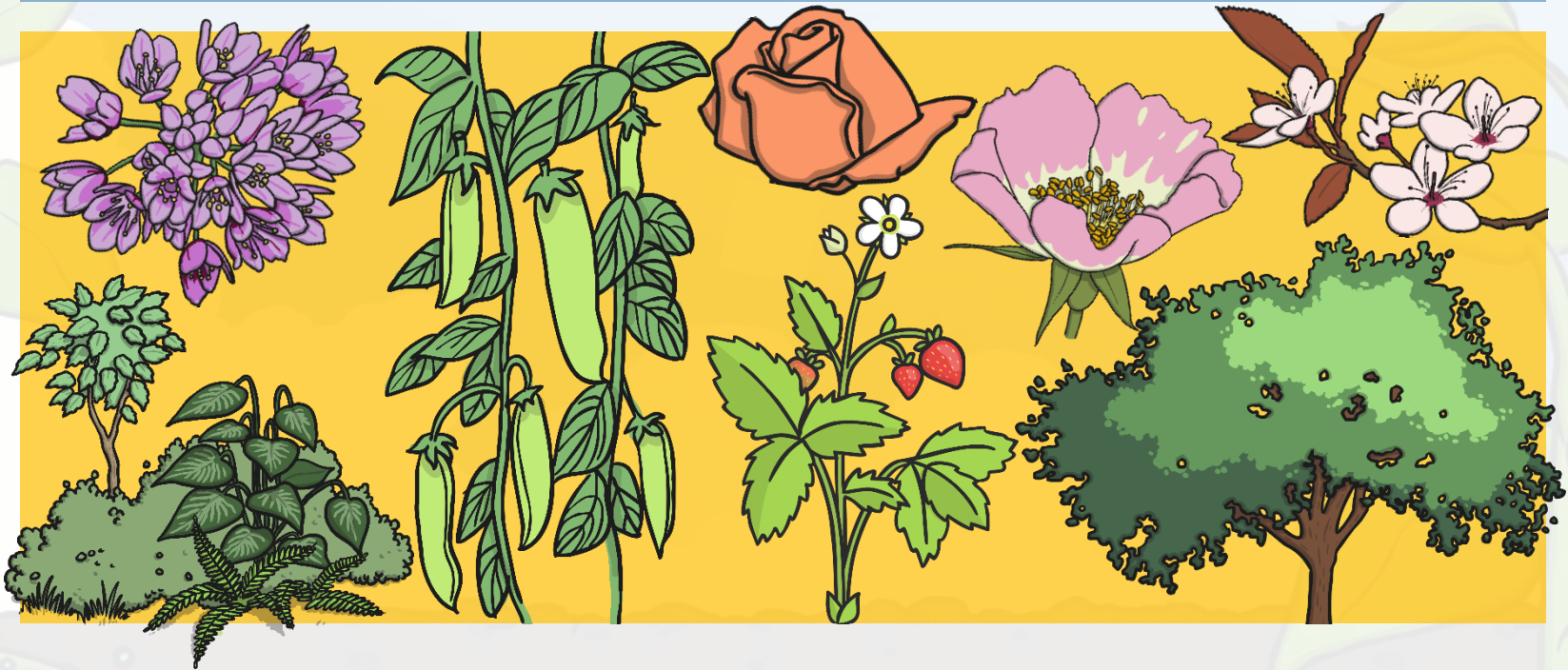
twinkl

Plants!

We are going to be learning about plants.

Do you recognise any of these plants?

Do you know what the different parts of the plants are called?



Parts of a Plant



Plants have different parts that do different jobs.

Do you know the names of the different parts of a plant?

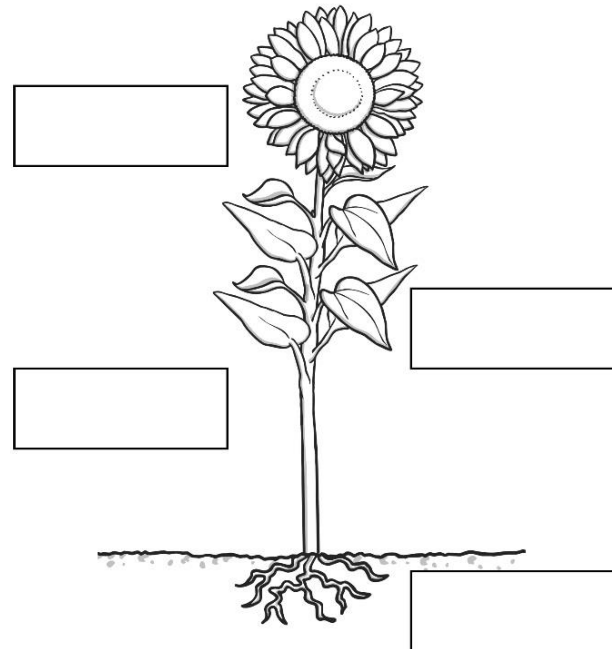
With your adult can you name the parts of a plant?

Now draw and label the parts of a plant in your exercise book.

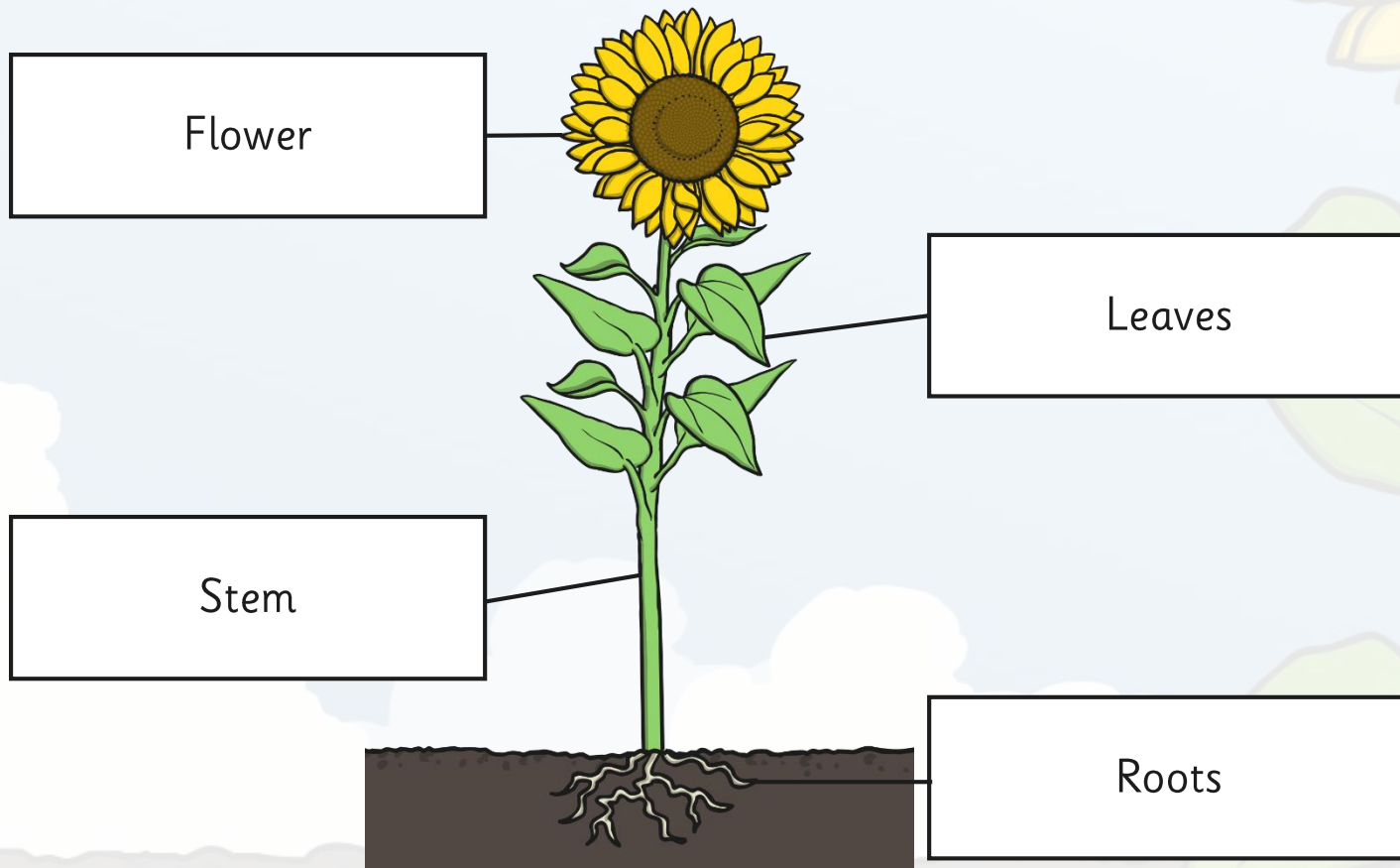
(The answers are on the next slide)

Parts of a Plant Labelling

Label the parts of the plant and then draw lines to connect the labels to the right part.



Parts of a Plant: How Did You Do?



What Jobs Do They Do?



Roots

Where do we find the roots of a plant?

They grow underneath a plant, below the surface of the soil.

Roots are usually long and are covered in small hairs.

What do you think their jobs are?

The roots anchor the plant in the ground.

They absorb water and nutrients from the soil.

What Jobs Do They Do?



Stem or Trunk

What is a stem or trunk?

Branches, leaves and flowers grow from the stem or trunk.

A trunk is woody, and often has a layer of bark around it.

What job does it do?

The stem or trunk holds the plant up.

It also carries water and nutrients from the roots to the leaves.

What Jobs Do They Do?



Leaves

What job do leaves do?

The leaves make food for the plant using sunlight and carbon dioxide from the air.

Photo courtesy of leaf watoru @flickr.com - granted under creative commons licence - attribution

What Jobs Do They Do?



Flowers

Do you know what the flower's job is?

Flowers are brightly coloured to attract insects and birds.

The insects carry pollen to other flowers.

Flowers use the pollen to make seeds to grow new plants.

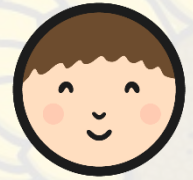
What Can You Remember?



Look at these pictures of the different parts of a plant.
Can you remember about the job or jobs each part does?



Fun Facts



Science 2 – Resource 2

Now is your chance to show what you have learnt!

Your job is to create a folding leaflet to explain the function of the different parts of a plant.

Parts of a Plant

Part 1

