



Love . Hope . Courage

Nursling Street

Nursling

Southampton

SO16 0XH

Email: admin@nursling.hants.sch.uk

Website: www.nurslingprimary.co.uk

Telephone: 02380732289

Headteacher: Mrs Joanne Jearrad BEd Hons.

09th February 2026

Attendance and Lateness

Dear Parents and Carers,

Every week in the Newsletter, we publish at the bottom of Page 1, the percentages of attendance for every class and the whole school. The expectation of 96% for every child to be in school is set by the Government because it is proven that children who are in school for this amount of time over the school year, have greater opportunity for success in life.

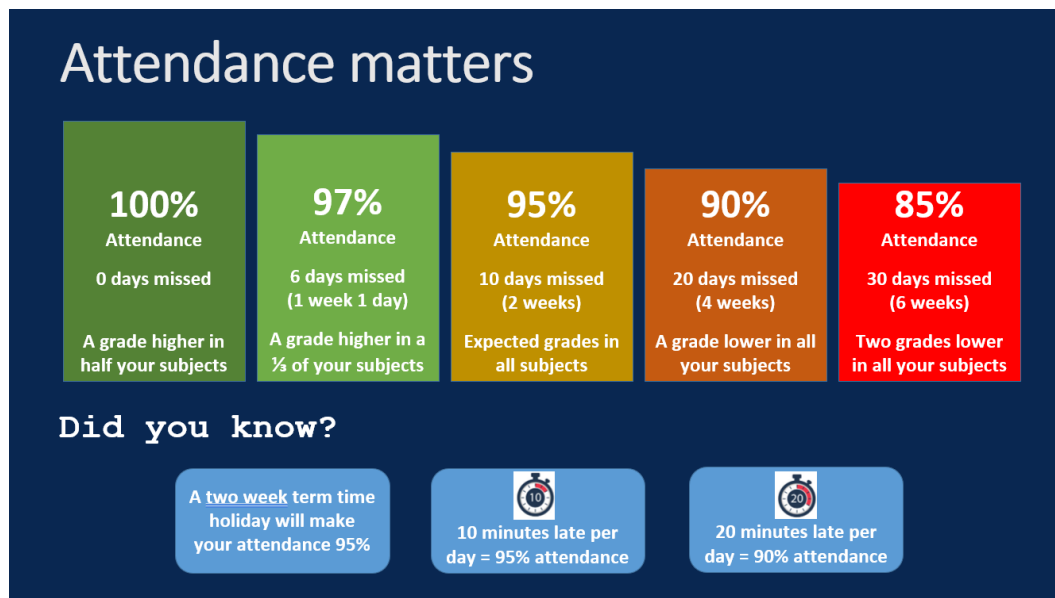
Unfortunately, our percentages of attendance have hit an all time low. Our whole school average attendance is currently 93.8% which puts us below the National Average. Your child's attendance is affected by a range of factors.

Area of concern	Meaning	Steps taken by school
Persistent Absence	Any child with 10% or more absence is a persistently absent child.	1. Attendance highlighted in school reports and parent-teacher meetings. 2. Letters home evidenced.
Late	When a child arrives at school after 8:50am, the designated registration time.	3. Meetings in school. 4. Referral to Legal Intervention Team. 5. Referral to Children's Services for inconsistent parenting and absence from education.
Unauthorised Absence	Holidays. Illness not proven by a medical appointment or regular illness causing concern. Medical appointments not related to the child. Transport issues.	6. Referral to a parenting class. 7. Penalty Notice to Hampshire County Council. 8. Court hearing.

If you take your child out of school, we ask that you follow the correct procedure. Phoning your child in sick when you are on holiday does not go unnoticed, children speak the truth. Our Admin team will follow our safeguarding procedures and will make contact if we are concerned about your child. Please save us all precious time and set a good example to your child.

Your responsibilities as a parent

By law, all children of compulsory school age (normally 5 – 16yrs) must receive a full-time education. As a parent, you have a legal responsibility to make sure this happens. Once your child is registered at a school, you are legally responsible for making sure they attend. This means your child should not have sessions of unauthorised absence.



Our responsibility as a school

We follow the Hampshire Code of Conduct where schools can submit a Legal Intervention Team referral once a pupil has received 10 or more unauthorised absences in a 100-session period and it can be evidenced by the school that they have been unable to resolve attendance concerns, including through the issue of a penalty notice.

Penalty Notices

- Hampshire County Council will give both parents responsible for the child, regardless of if still together or not, a fine of £80, rising to £160 if not paid within 21 days.
- If you get a second fine in 3 years, it will be £160. If you do not pay the fine in 28 days you may be taken to court for keeping your child out of school.

If your child's attendance is causing concern, you will be receiving a personal letter. Depending on what steps have already been taken by the school over time, will depend on what actions will be taken next. Please ensure your child is in school to give them greater chance of success.

Yours sincerely

Mrs Jearrad

*The Lord says "I will guide you along the best pathway of your life.
I will advise you and watch over you."
Psalm 32:8 NLT*

*The Lord says "I will guide you along the best pathway of your life.
I will advise you and watch over you."
Psalm 32:8 NLT*



*The Lord says "I will guide you along the best pathway of your life.
I will advise you and watch over you."
Psalm 32:8 NLT*

